

Opti-Mate

Broodstock optimisation system
for batch-spawning fish.

Opti-Mate is a powerful new solution from Xelect for planning and re-organising breeding tanks for batch-spawning fish species such as Sea Bass, Sea Bream and Barramundi.

Genetic breeding structures for batch spawning programs are extremely complex due to the high number of potential spawning pairs. Optimal groupings are a common challenge for these species as they are highly impractical to conduct manually. Unlike traditional broodstock selection algorithms, Opti-Mate is uniquely customised to deal with batch spawners in order to achieve optimal breeding populations.

The software can be used to reorganise existing tanks following genetic analysis or to create new tanks. Factors taken into account include photoperiod, sex ratio, age and fish location in order to minimise disturbance and achieve early spawning.

Opti-Mate was developed by Xelect in collaboration with experts at the Roslin Institute in Edinburgh.

.....
maximise genetic gain and
minimise inbreeding

fully customisable,
incorporating pedigree
information and trait data
.....



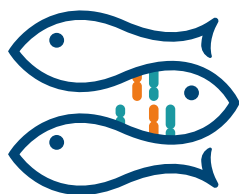
Opti-Mate

Achieve maximum trait gains, while maintaining minimum inbreeding and co-ancestry between broodstock – optimal contribution selection.

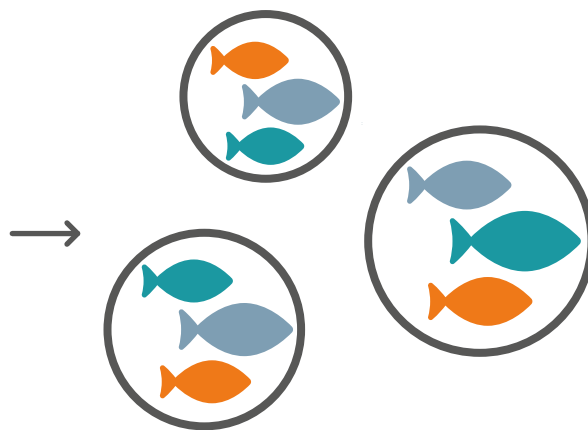
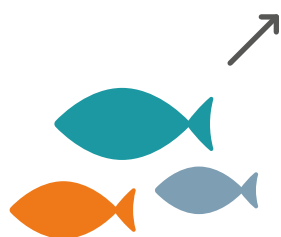
Fully supported and implemented by experienced by our broodstock genetic managers both remotely and at your hatchery.

Flexible and highly tunable system to incorporate logistical constraints and infrastructure limitations.

Integrates with any level of genetic/genomic analysis, including mass selection, marker assisted selection and genomic selection.



Opti-Mate



Efficient Hatchery Organisation Plan

your expert genetics partner
xelect.co.uk

UK HEADQUARTERS

Horizon House, Abbey Walk
St Andrews, Fife, KY16 9LB, UK

info@xelect.co.uk
+44 (0)1334 845204 ext.301

